

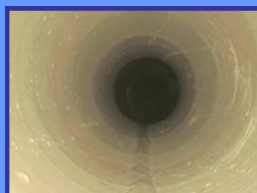
# Pitch Fibre Pipes - Help Sheet

## What are pitch fibre pipes..?

Drainage pipes laid from the 1950's to the 1970's are most likely to be made of pitch fibre. It was a cheaper, more lightweight and easier to handle material made of wood cellulose impregnated with inert coal tar pitch. Manufactured in 8ft lengths with push fit joints, it seemed ideal for the purpose.

## What is the problem..?

It soon became apparent that this material had some fundamental problems, the British Standard BS2760 was withdrawn on the pipes in 1987. The pipes were found to blister with great amounts of hot water, fats and oils which soften the tar ingredient of the pipe making them susceptible to deformation and collapse. 50,000 houses every year experience problems relating to pitch fibre pipes causing blockages and overflow. It is estimated that if fitted correctly and without adverse ground conditions a pipe may last approximately 40 years which means most will have reached their life expectancy already.



## How much will it cost..?

Our prices are fixed per job, there are no hidden costs. We can offer a discounted drain survey which includes a full colour DVD and detailed drawings of the drainage layout. Subsequent repairs required such as patching and lining provide a very affordable option to excavating an area, repairs usually outlast the pipe and are quoted for once we have the full report showing any defects. Check with your insurers as drain repairs can be covered in some instances. Replacing sewer and drain runs using our pipe bursting technique whilst upsizing the pipes is priced per job.

## What can Clear-flow offer..?

### CCTV Drainage Surveys

- Suitable for homebuyer survey reports
- Locate and remedy drainage problems
- Full colour DVD video footage
- Latest generation of Minicam inspection systems

### Drain Clearance & Cleaning

- Blocked drains fixed quickly and easily
- Cut through silt, roots, debris and grease deposits
- 4000 psi jetting facilities

### Patch Repairs

- A cost effective, minimal disruption repair for isolated defects.
- Prevents tree route contamination through joints
- Seals leaks, prevents water ingress and strengthens the pipe

### Pipe Lining

- A cost effective, minimal disruption repair for failing pipes and continuous defects
- Most suitable for longer lengths of pipe
- Ideal for re-shaping failing pitch fibre pipes, strengthening structure, sealing joints & repairing cracked lengths

### Pipe Bursting

- Trenchless technology to replace entire sewer and drain runs
- Bursting head breaks out old pipe whilst drawing in new lengths without the need to excavate
- Ideal for upsizing old pipes increasing capacity

# Clear-flow

Call today 0800 317082

email: [info@clearflowttd.com](mailto:info@clearflowttd.com)  
web: [www.clearflowttd.com](http://www.clearflowttd.com)

